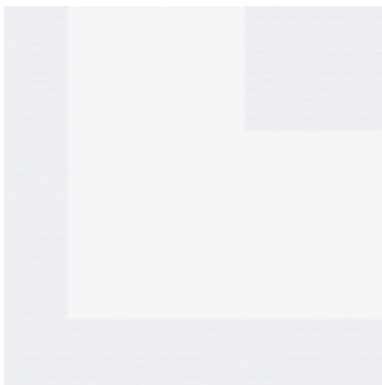
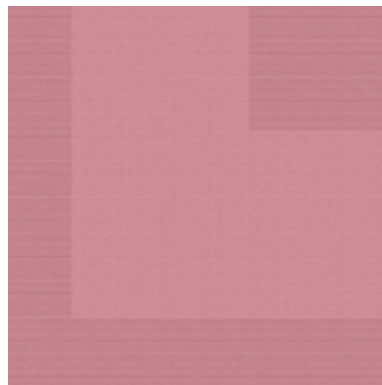


**907 Atlaskante TSR16 bianco**



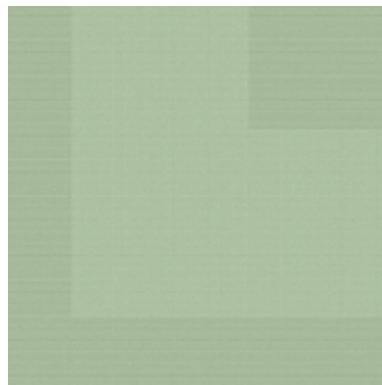
**907 Atlaskante TSRR22 var. 685 altrosa**



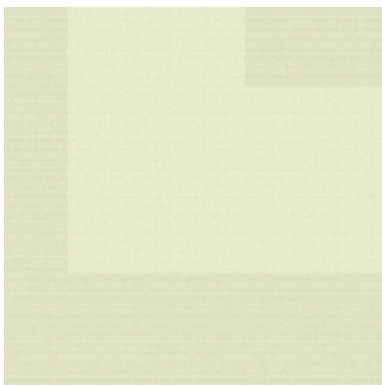
**907 Atlaskante TSRR22 var. 687 aprikose**



**907 Atlaskante TSRR22 var. 689 tanne**



**907 Atlaskante TSRR22 var. 690 prosecco**



**907 Atlaskante TSRR22 var. 691 gold**



**907 Atlaskante TSRR22 var. 692 blauviolett**



**Masa SpA Industrie Tessili**

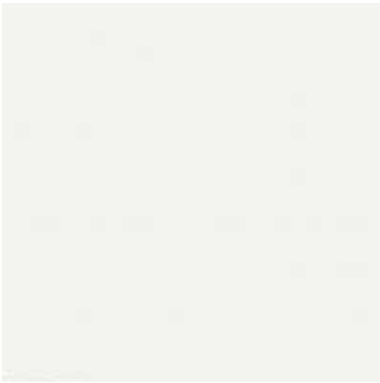
Via Mestre 37

21050 Bolladello di Cairate (Va) Italy

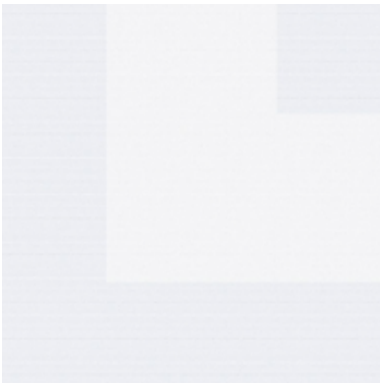
T +39 0331 310145 F +39 0331 311325

[www.masa.it](http://www.masa.it) - [masa@masa.it](mailto:masa@masa.it)

**276 Diagonale TSRR22 t/c 180 banana**



**033 Fascia Raso TSRR22 bianco**



**110 Crespo Fascia 5 Righe ASR32 bianco**



**238 Occhio di Pernice Fascia Ornamentale ASR32 bianco**



**038 Fiorito TSRR22 bianco**



**038 Fiorito TSRR22 t/c 169 sekt**



**038 Fiorito TSRR22 t/c 401 giallo**



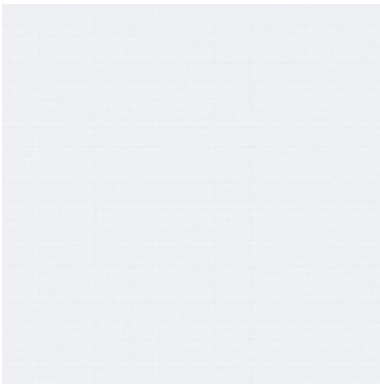
**038 Fiorito TSRR22 t/c 415 ecrù**



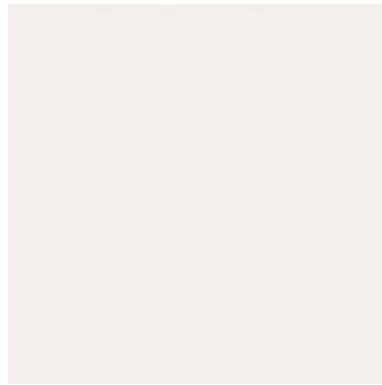
**038 Fiorito TSRR22 t/c 429 salmone**



**278 Gros TSRR22 bianco**



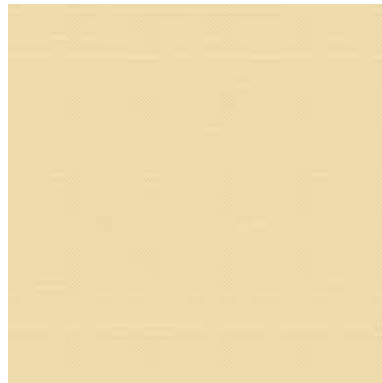
**278 Gros TSRR22 t/c 135 wafer**



**278 Gros TSRR22 t/c 150 noce**



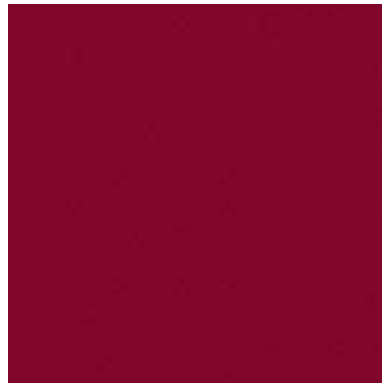
**278 Gros TSRR22 t/c 474 pompelmo**



**270 Intreccio TSRR25 var. 515 giallo**



**270 Intreccio TSRR25 var. 967 lampone**



**187 Topazio TSRR25 var. 201**



**691 Iride TSR54 bianco**



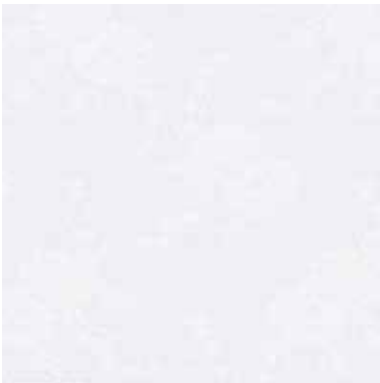
**691 Iride TSR54 t/c 015 giallo**



**691 Iride TSR54 t/c 190 prosecco**



**059 Margherita TSRR22 bianco**



**059 Margherita TSRR22 var. 515 giallo**



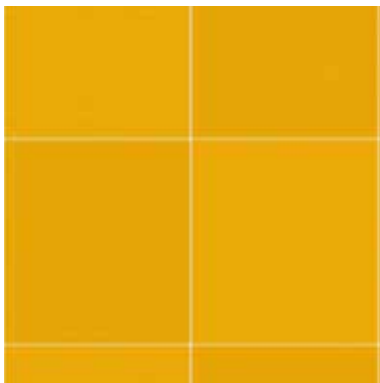
**059 Margherita TSRR22 var. 535 crema**



**059 Margherita TSRR22 var. 918 salmone**



175 Sintesi TSRR22 var. 701



176 Young TSRR22 var. 701



175 Sintesi TSRR22 var. 702



176 Young TSRR22 var. 702



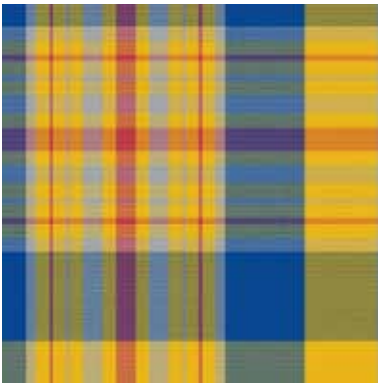
175 Sintesi TSRR22 var. 703



176 Young TSRR22 var. 703



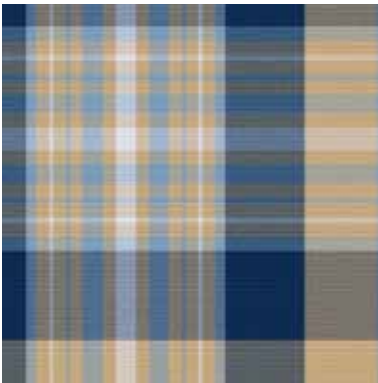
092 Taormina art. Country var. 202



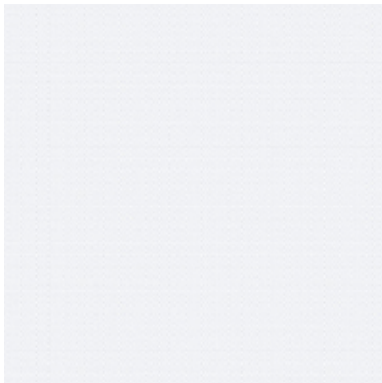
092 Taormina art. Country var. 205



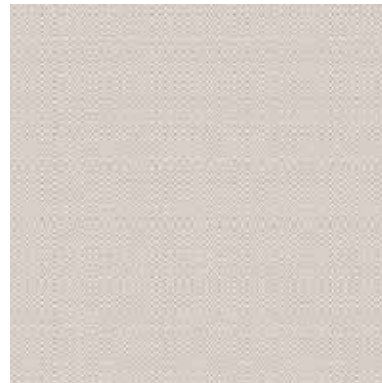
092 Taormina art. Country var. 206



**677 Trend TSRR22 bianco**



**677 Trend TSRR22 t/c 167 mokka**



**677 Trend TSRR22 t/c 479 bambù**



**677 Trend TSRR22 var. 891 lampone/bordeaux**



**677 Trend TSRR22 var. 892 aragosta/arancio**



**677 Trend TSRR22 var. 893 castagna/avana**



**677 Trend TSRR22 var. 894 goldfinger/giallo oro**



**Masa SpA Industrie Tessili**

Via Mestre 37

21050 Bolladello di Cairate (Va) Italy

T +39 0331 310145 F +39 0331 311325

[www.masa.it](http://www.masa.it) - [masa@masa.it](mailto:masa@masa.it)